

# PROPERTY FOR: RENT

PROJECT NAME: SHELADIA ERIS

Expected Rent: **Rs.22,000/-**



|                |                  |            |   |
|----------------|------------------|------------|---|
| Property ID:   | P-24790          | Bathrooms: | 2 |
| Property Type: | Flat / Apartment | Bedroom:   | 2 |
| State:         | Gujarat          | Balconies: | 1 |
| City:          | Ahmedabad        |            |   |
| Locality:      | Shela            |            |   |
| Pincode:       | -                |            |   |
| Landmark:      | -                |            |   |
| Landzone:      | -                |            |   |

|                     |              |              |             |
|---------------------|--------------|--------------|-------------|
| Super Builtup Area: | 1150 Sq. Ft. | Carpet Area: | 600 Sq. Ft. |
|---------------------|--------------|--------------|-------------|

|                   |             |
|-------------------|-------------|
| Furnished Status: | Unfurnished |
|-------------------|-------------|

|          |      |                 |                  |
|----------|------|-----------------|------------------|
| Parking: | Open | Two wheeler : 1 | Four wheeler : 1 |
|----------|------|-----------------|------------------|

|                           |                   |                     |                    |
|---------------------------|-------------------|---------------------|--------------------|
| Electricity Availability: | 24 Hour Available | Water Availability: | 24 Hours Available |
|---------------------------|-------------------|---------------------|--------------------|

|                  |   |
|------------------|---|
| No. of Bedrooms: | 2 |
|------------------|---|

## TENANT PREFERENCES

|                |    |                      |    |
|----------------|----|----------------------|----|
| Bachelor / PG: | No | Company Guest House: | No |
|----------------|----|----------------------|----|

|           |    |                 |    |
|-----------|----|-----------------|----|
| With Pet: | No | Non Vegetarian: | No |
|-----------|----|-----------------|----|

**BUILDING DETAILS**

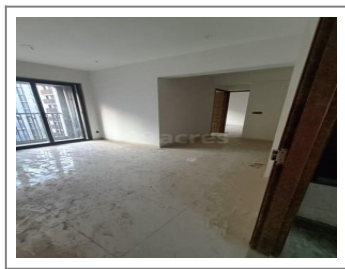
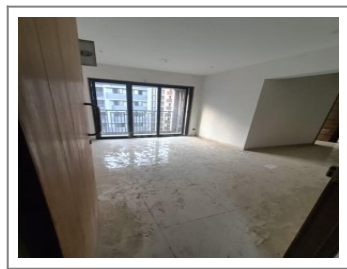
|                       |                                                                                                 |                                                                                        |                                                                                                         |
|-----------------------|-------------------------------------------------------------------------------------------------|----------------------------------------------------------------------------------------|---------------------------------------------------------------------------------------------------------|
| Total Towers:         | 10                                                                                              | Total Floor:                                                                           | 14                                                                                                      |
| Units Per Floor:      | 4                                                                                               |                                                                                        |                                                                                                         |
| No. of Lifts:         | 2                                                                                               | Services Lift Present:                                                                 | No                                                                                                      |
| Age Of Construction : | 1 Year                                                                                          |                                                                                        |                                                                                                         |
| Building Amenities:   | CCTV Camera<br>Visitor Parking<br>Security<br>Yoga Room<br>Jogging Track<br>Senior Citizen Area | Garden<br>Lift<br>Cricket Court<br>Games Room<br>Multi Purpose Court<br>Entrance Foyer | Fire Safety<br>Gym<br>Kid's Play Area<br>Waste Disposal<br>Pick up and Drop off Zone<br>Gated Community |

**TRANSACTION DETAILS**

|                              |                                            |                         |              |
|------------------------------|--------------------------------------------|-------------------------|--------------|
| Expected Rent:               | Rs.22,000/- (Twenty Two Thousands Rupees ) |                         |              |
| Security Deposit:            | Rs.44,000/-                                |                         |              |
| Paid by:                     | Tenant                                     |                         |              |
| Water Charges Paid by:       | Tenant                                     | Rent Agreement Charges: | Tenants      |
| Electricity Charges Paid by: | Tenant                                     | Municipal Tax Paid by:  | Tenant       |
| Yearly Rent Increment:       | 10%                                        |                         |              |
| Availability Status:         | Immediate                                  |                         |              |
| Buyer ( Brokerage ):         | 1 Month Rent                               | Seller ( Brokerage ):   | 1 Month Rent |

## PROPERTY PHOTOS

---



**Remarks:** This beautifully located 2BHK Flat/Apartment of 1150 Sq. Ft. is available for Rent in Shela, Ahmedabad. The Flat/Apartment is Unfurnished and equipped with the basic amenities and connected with all major places.

**Note :** All visuals, images, facilities and other details shown here are for presentation only and are subject to change by the builder/developer/owner without any obligation.

**Disclaimer :** onestopproperty.in is a online Real Estate platform for Seller and Agent/Broker/Customer/Buyer to facilitate their real estate needs. One Stop Property cannot control any transactions between the Seller and the Agent/Broker/Customer/Buyer. Properties details displayed on the onestopproperty.in website are for informational purposes only. Information regarding real estate projects including property/project details, by various Builder(s)/Developer(s)/Broker(s) who have advertised their property/project. Nothing contained herein shall be deemed to constitute legal advice, solicitations, marketing, offer for sale, invitation to offer, invitation to acquire by the developer/builder or any other entity. One Stop Property Solutions Pvt Ltd shall neither be responsible nor liable to mediate or resolve any disputes or disagreements between the Seller and Agent/Broker/Customer/Buyer. Hereby we strongly advised to visit the relevant RERA website before taking any decision based on the contents displayed on the website.